

myHome
myGarden




sahaj garden



“ Where my life
blooms with
nature”

Every morning I wake up to a special garden wearing the garments of nature's beauty. Breathe deep into the fragrance of flowers arranged with delight. I see a blue sky over me. Maturing sun, cotton clouds- moving over a green field conspiring with the south-wind. My renewed soul sings in harmony with the wonderful colours of nature.

Welcome to 'Sahej Garden'. Standing on a tranquil and verdant area, Sahej Garden boasts of a 7-storey earthquake resistant residential building having 20 luxury apartments and 2 duplex units, proving attractive to the occupants, who appreciate the advantage of living within a secured community. All these are designed to provide maximum comfort and security at a place in the heart of the city, yet free from the din and bustle of everyday life.

“I want to live
in the
heart”

Sahej Garden is located at the most exclusive area of Rourkela, opposite to Hotel Mayfair. It is situated at a few-minute walking distance from Vesaj Patel Hospital with modern facilities nearby. The project stands adjacent to the main road, well connected to the city by any means of transportation to enhance my living experience.

- 10 minutes from railway station
- Opposite to Mayfair the boutique hotel
- Close to renowned schools and academy
- Close to prominent hospitals
- Close to market



“I believe it
& the belief
is strong”



NATURAL COMFORT, Rourkela



SAHEJ VILLA, Rourkela



NATURAL PLAZA, Sambalpur



SAHEJ ENCLAVE, Rourkela

The story began years ago, when Real Tech Group was established with a dream of providing people with new kind of living experience, the likes of which no one had ever thought before. With longstanding emphasis on commitment, quality and innovation, the group succeeded to maintain years of relationship with people by understanding their dreams and making those dreams come true. The next stop in this path is the opening of Sahej Garden, where every home awaits to create a unique living experience the whole family can enjoy.



“I am what
I live”

It's my lifestyle that speaks of my taste. Keeping this in mind, the project combines tastefully designed and impeccably finished apartments, fitted with the latest in modern conveniences. Affordability paired up with exceptional lifestyle- is the highlight of Sahej Garden.

Specifications

Structure: RCC frame with superior quality cement concrete finish walls in conventional brickwork with cement plaster & plaster of paris

Lobby: Granite finish with kota stone in staircase

Flooring: Vitrified tiles in bedrooms, living & dining, laminated wooden floor in master bedrooms

Windows: Power-coated aluminium windows with 4 mm tinted glass

Sanitary: Chrome plated fittings of best quality

Kitchen: Platform made of Granite with stainless steel sink, tiles upto 2 ft above kitchen counter, anti-skid tiles for floor

Toilet: Anti-skid tiles for floor upto door height, hot and cold water in shower, CP fittings of high-quality, glass basin counter in one bathroom.

Provision: Exhaust fan point in kitchen and toilet

Electricals: AC & TV points in bedroom, geyser point in all toilets, 15 amp point for refrigerator in kitchen

Water: 24-hour filtered water supply

Generator: Provision in every flat (at extra cost)

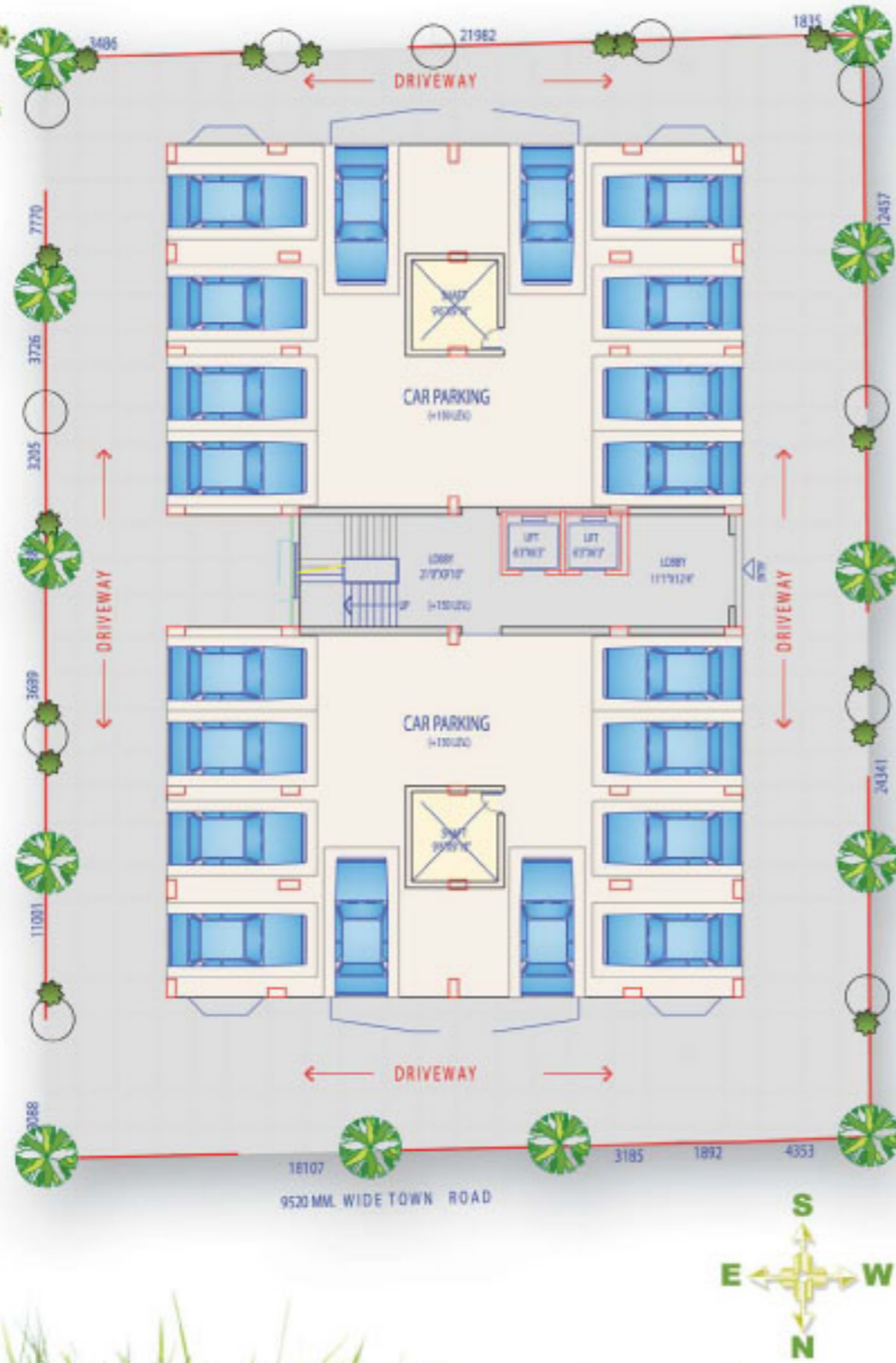
Security: Round-the-clock with intercom system

Amenities

- Excellent elevation
- Earthquake Resistant foundation
- Air-conditioned decorated lobby
- Express elevator
- Standby generator (at extra cost)
- Well built and well lit areas
- Dedicated car parking for visitors
- Round-the-clock security
- Children's playing area
- Intercom
- Adequate water supply
- Efficient waste management system
- Facility management system
- Fire fighting arrangement.

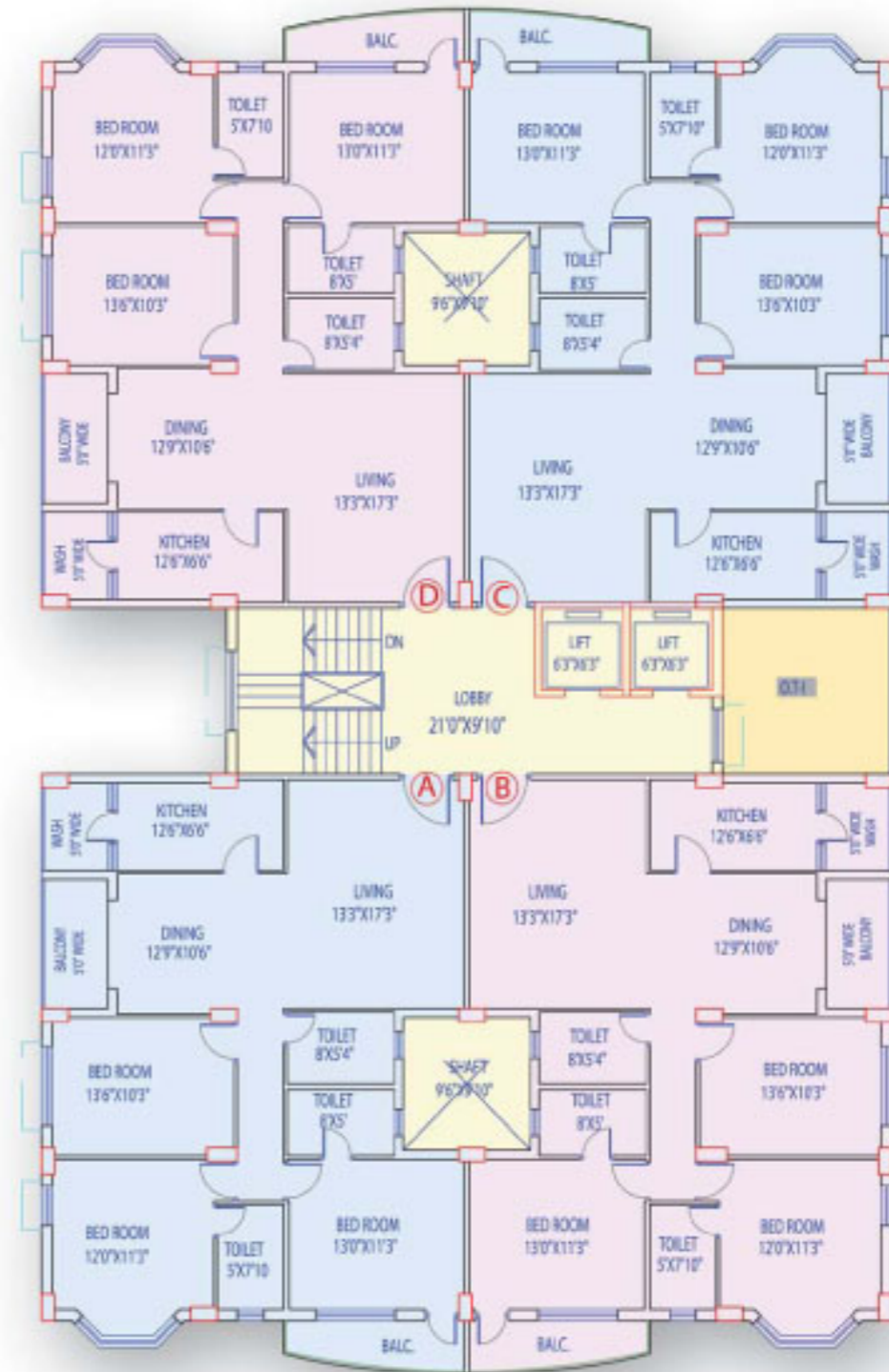


Ground floor plan



Typical floor plan

(1ST TO 7TH)



| Flat no. | Bedrooms | Saleable area |
|----------|----------|---------------|
| A | 3 | 1680 |
| B | 3 | 1680 |
| C | 3 | 1680 |
| D | 3 | 1680 |



sahaj garden

H/9, Civil Township, Opp Hotel Mayfair, Rourkela
Phone : 0661 2502822

Developer



REAL TECH GROUP
Building dreams to reality

SAHEJ INFRAPROJECTS PVT LTD

Nanda Bhawan, Main Road, Rourkela
Phone : 0661 2502822, Mobile : 9437042184
e-mail : realtechgroup1@gmail.com

Architect

Raj Aganwal & Associates
8B, Royd Street, 2nd Floor, Kolkata – 700 016
Phone : 2246 3339

This brochure is not a legal document. It describes the conceptual plan of Sahaj Garden.
The developer reserves the right to change the layout plan, elevation, facilities and specifications.